

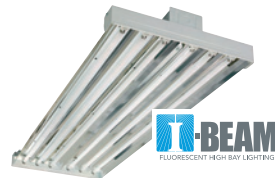
POWER PICKS



Convenient
online ordering
is just a click away at
fgorders.com.



LiquidTight ST



I-Beam

AUGUST 2009

Call or visit one of our
locations for purchase
information:

ST. LOUIS

2446 Schuetz Road
Maryland Heights, MO 63043
800-333-3122
314-569-3122
314-569-0206 FAX

KANSAS CITY

9735 Commerce Parkway
Lenexa, KS 66219
800-707-3122
913-894-8844
913-894-4485 FAX

COLUMBIA, MO

1815 Vandiver Drive
Columbia, MO 65202
800-283-3122
573-474-4194
573-474-4199 FAX

QUINCY, IL

1700 North 45th Street
Quincy, IL 62305
800-234-3122
217-223-3122
217-223-3907 FAX

WASHINGTON, MO

1 Chamber Drive
Washington, MO 63090
888-959-9448
636-390-4949
636-390-4172 FAX

*Some brands and items
may not be available
at all French Gerleman
locations. Inventory
levels vary by branch.*

Visit us online at:

frenchgerleman.com

fgorders.com

Call or visit one of our
locations or go to
frenchgerleman.com/powerpicks
for more information on
these products.

See back for product details >



U-Bent



Compact Circuit Protector



*PANELMAX™
DIN Rail Wiring Duct*



Metal Raceway

Request a **French Gerleman** catalog at
frenchgerleman.com/catalog.



*Color-Keyed® KUBE®
Flag, Tee and Cross
Connectors*



*Uniprise® ReadyPATCH™
Pre-Terminated Fiber
Solution*

Appleton | LiquidTight ST



Appleton, the premium hazardous location electrical components brand, now has pre-assembled KO sealing rings on their Liquidtight ST cable and conduit connectors. This eliminates additional purchasing and allows for up to 25% quicker installations than competitor's fittings. Appleton's Liquidtight connectors secure grounds and seals liquidtight flexible metal conduit to electrical machinery in wet and adverse environments and are ideal for Industrial and OEM applications. The user-friendly, three-piece design provides quick assembly and long-term protection from moisture and vibration.

Lithonia | I-Beam



I-BEAM® System featuring T5HO Cool Running™ Technology combines high ambient operation with the reliability, energy efficiency and lighting quality of fluorescent lighting. Fluorescent benefits for distribution centers, warehouses, industrial/manufacturing and retail spaces. The first T5HO fluorescent high bay UL/C-UL Listed for environments up to 65°C (149°F), featuring industry-leading, five-year warranty up to 55°C and a three-year warranty up to 65°C. I-BEAM delivers up to 50% energy savings over 400 watt metal halide, and maintains designed light levels over the system lifetime.

Philips | U-Bent



Going green gets easier and easier with Philips new 1 5/8" U-Bent Fluorescent Lamp! The new 1 5/8" U-Bent is a perfect fit for 2' x 2' fixtures in any retail, office, school or hospital environment. Philips new 1 5/8" U-Bent comes in both 29W and 31W using ALTO® technology. With just 3 mg of mercury per lamp, it contains the lowest mercury levels of any T8 U-Bent in the industry.

Cooper Bussmann | Compact Circuit Protector



New Compact Circuit Protector (CCP) fused switch includes a Low-Peak® CUBEFuse® Class J performance version, increasing CCP capability to 60A. The current-limiting performance of a properly sized Low-Peak CUBEFuse unit offers Type 2 (IEC 947-4-1) "No Damage" coordinated motor starter protection. Compact size and high short-circuit current rating (SCCR) of 200kA with a Class J CUBEFuse or Class CC fuse, the CCP also retains best-in-class full-voltage rating of 600Vac, providing more installation flexibility than slash-rated devices at 480/277Vac.

Panduit | PANELMAX™ DIN Rail Wiring Duct



Achieve Panel Space Optimization with PANELMAX™ DIN Rail Wiring Duct. This innovative wire management solution maximizes industrial enclosure space utilization for flexibility in panel layout and reduced material and installation costs. The unique design raises components from the panel surface for easier component access and faster connections. Three sizes of the DIN rail wiring duct base are compatible with common DIN rail and DIN mount components to satisfy diverse application requirements.

Hubbell Wiring Device-Kellems | Metal Raceway



Hubbell Metal Raceway gives you a choice of steel, aluminum, single- or multi-channel – plus:

- **More innovation.** Boxes feature rounded corners, one-seam construction for a cleaner look, and Hubbell Handi-Screw® for easier installation.
- **More capacity.** Hubbell's HBL4750 series 70/30 By-Pass Divider holds 20% more data cable in a multi-channel raceway.
- **More flexibility.** UL classified transition fittings connect with competitive systems and an extensive line of plates accommodate a broad range of datacom and power connections.

Thomas & Betts | Color-Keyed® KUBE® Flag, Tee and Cross Connectors



A fast, easy and affordable way to make 90° and T electrical connections. Color-Keyed® Flags and Tees designed – and UL/CSA approved – for use with standard Color-Keyed® lugs and splices from #8 through 4/0 AWG in field-assembled configurations. Eliminate high-cost flexible conductors for connections requiring 90° bending or expensive brazed or welded connectors! Insulated with custom-fit halogen-free polypropylene for safety and performance, Color-Keyed® Flags and Tees available separately or in a convenient multi-tap field kit.

CommScope® | Uniprise® ReadyPATCH™ Pre-Terminated Fiber Solution



Data Centers are critical to organizations, so speedy installations are a necessity. CommScope® has an answer — the Uniprise® ReadyPATCH™ Solution. ReadyPATCH combines pre-terminated, factory-tested hardware and backbone trunk cables with ruggedized MPO-single fiber fanout patch cords, array cords and standard fiber patch cords. ReadyPATCH allows installers to connect system components in a fraction of the time required with traditional field terminable solutions. Up to 144 fibers can be ready for service at once, dramatically accelerating time to usability, with factory-guaranteed performance.

Call or visit one of our locations or go to
frenchgerleman.com/powerpicks
for more information on these products.

